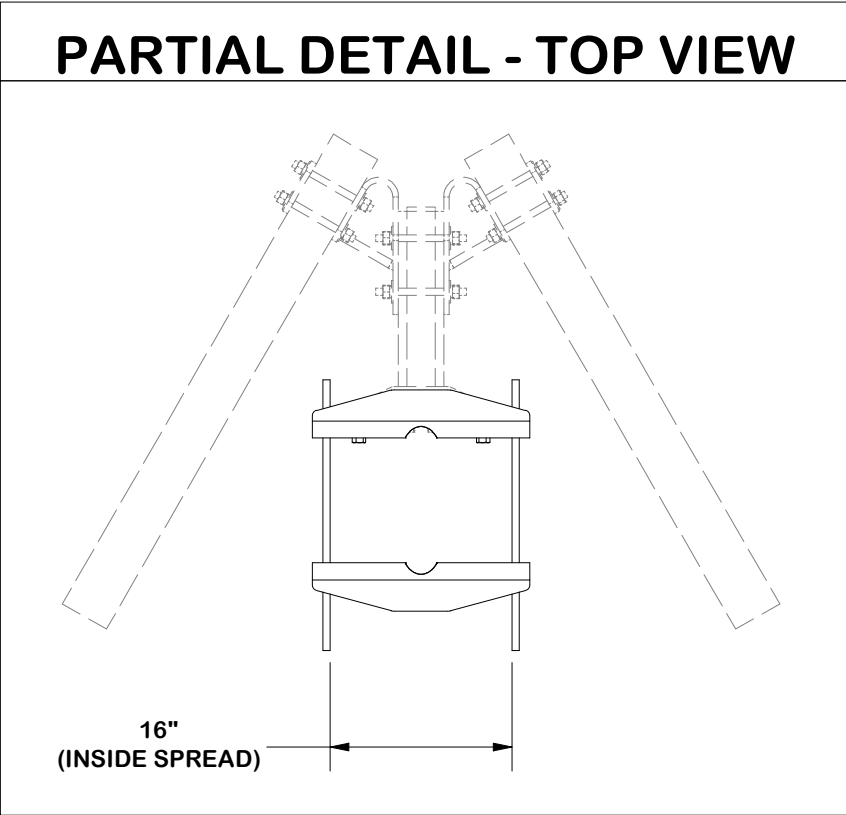
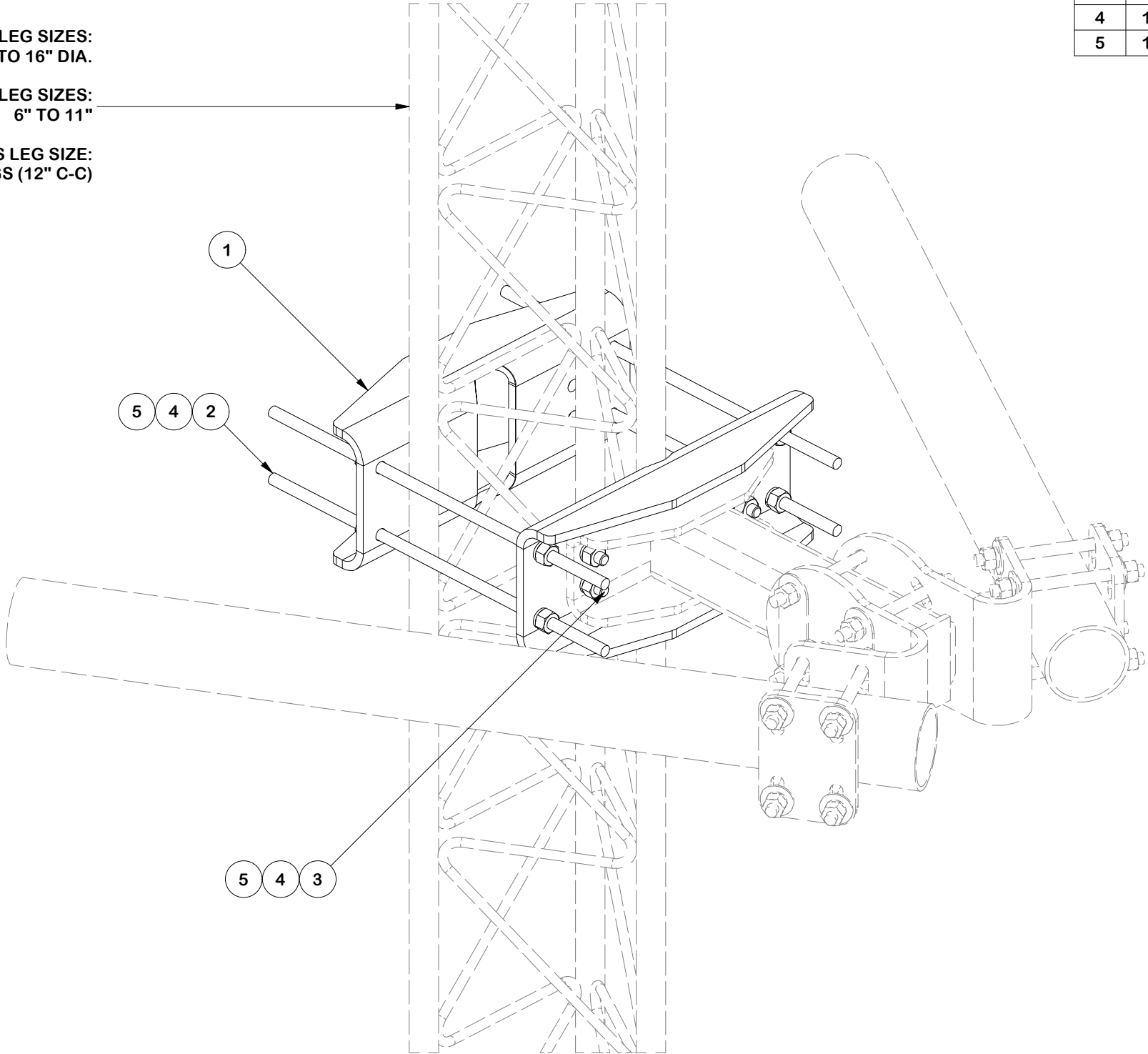


PARTS LIST						
ITEM	QTY	PART NO.	PART DESCRIPTION	LENGTH	UNIT WT.	NET WT.
1	2	X-FACE-LL	FACE ASSEMBLY LARGE LEG ADAPTER	24 in	34.84	69.69
2	4	G58R-24	5/8" x 24" THREADED ROD (HDG.)		2.09	8.36
3	4	A582114	5/8" x 2-1/4" HDG A325 HEX BOLT	2 1/4 in	0.31	1.25
4	12	G58LW	5/8" HDG LOCKWASHER		0.03	0.31
5	12	G58NUT	5/8" HDG HEAVY 2H HEX NUT		0.13	1.56
					TOTAL WT. #	81.17

ROUND LEG SIZES:
9-1/2" DIA. TO 16" DIA.

90° ANGLE LEG SIZES:
6" TO 11"

TRUSS LEG SIZE:
#12 TRUSS LEGS (12" C-C)



TOLERANCE NOTES

TOLERANCES ON DIMENSIONS, UNLESS OTHERWISE NOTED ARE:
SAWED, SHEARED AND GAS CUT EDGES ($\pm 0.030"$)
DRILLED AND GAS CUT HOLES ($\pm 0.030"$) - NO CONING OF HOLES
LASER CUT EDGES AND HOLES ($\pm 0.010"$) - NO CONING OF HOLES
BENDS AND ANGLES ARE $\pm 1/2$ DEGREE
ALL OTHER MACHINING ($\pm 0.030"$)
ALL OTHER ASSEMBLY ($\pm 0.060"$)

PROPRIETARY NOTE:
THE DATA AND TECHNIQUES CONTAINED IN THIS DRAWING ARE PROPRIETARY INFORMATION OF VALMONT INDUSTRIES AND CONSIDERED A TRADE SECRET. ANY USE OR DISCLOSURE WITHOUT THE CONSENT OF VALMONT INDUSTRIES IS STRICTLY PROHIBITED.

DESCRIPTION

FACE ASSEMBLY LARGE LEG KIT

CPD NO.		DRAWN BY CMFL 9/28/2021		ENG. APPROVAL	
CLASS 87	SUB 02	DRAWING USAGE CUSTOMER		CHECKED BY	

SITE PRO 1

A valmont COMPANY

Locations:
New York, NY
Atlanta, GA
Los Angeles, CA
Plymouth, IN
Salem, OR
Dallas, TX
Tampa, FL

Engineering
Support Team:
1-888-753-7446

PART NO.	FACE-LLEG	PAGE 1 OF 1
DWG. NO.	FACE-LLEG	